

AT OLD GOA

STRUCTURE: RCC frame with external Laterite / AAC block and internal walls of bricks. Sloping roof with Mangalore tiles.

FLOORING: 60 X 60 Double charged vitrified tiles in Living, Dining, and other rooms.

DOOR/WINDOWS: Main Door of Teakwood, UPVC windows & French doors. Internal Doors laminated & Matti wood frames.

DECOR: Internal Royal Emulsion washable paint. External Apex Asian brand paint.

KITCHEN: Granite kitchen platform, Franky brand stainless steel sink and ceramic tiles upto 1 meter above platform.

ELECTRICAL: 3 phase concealed polycab wiring with Roma / Legrand switches, generator backup for Lift and common areas.

TOILET: Jaguar fittings, wash basin and shower with hot and cold mixtures and solar geyser.

WATER SUPPLY: Underground sump and Overhead Water tank.



**THERE IS SOMETHING
PERMANENT, AND
SOMETHING EXTREMELY
PROFOUND, IN OWNING A
HOME.**

* ADDRESS *

MSK Building Systems/MSK Builders

A Project by -

**MSK
BUILDERS**



8th Floor 817, Gera 's Imperium Grand
Opp. Ginger Hotel, Patto, Panaji, Goa - 403001

Cont :- + 91-8007130991

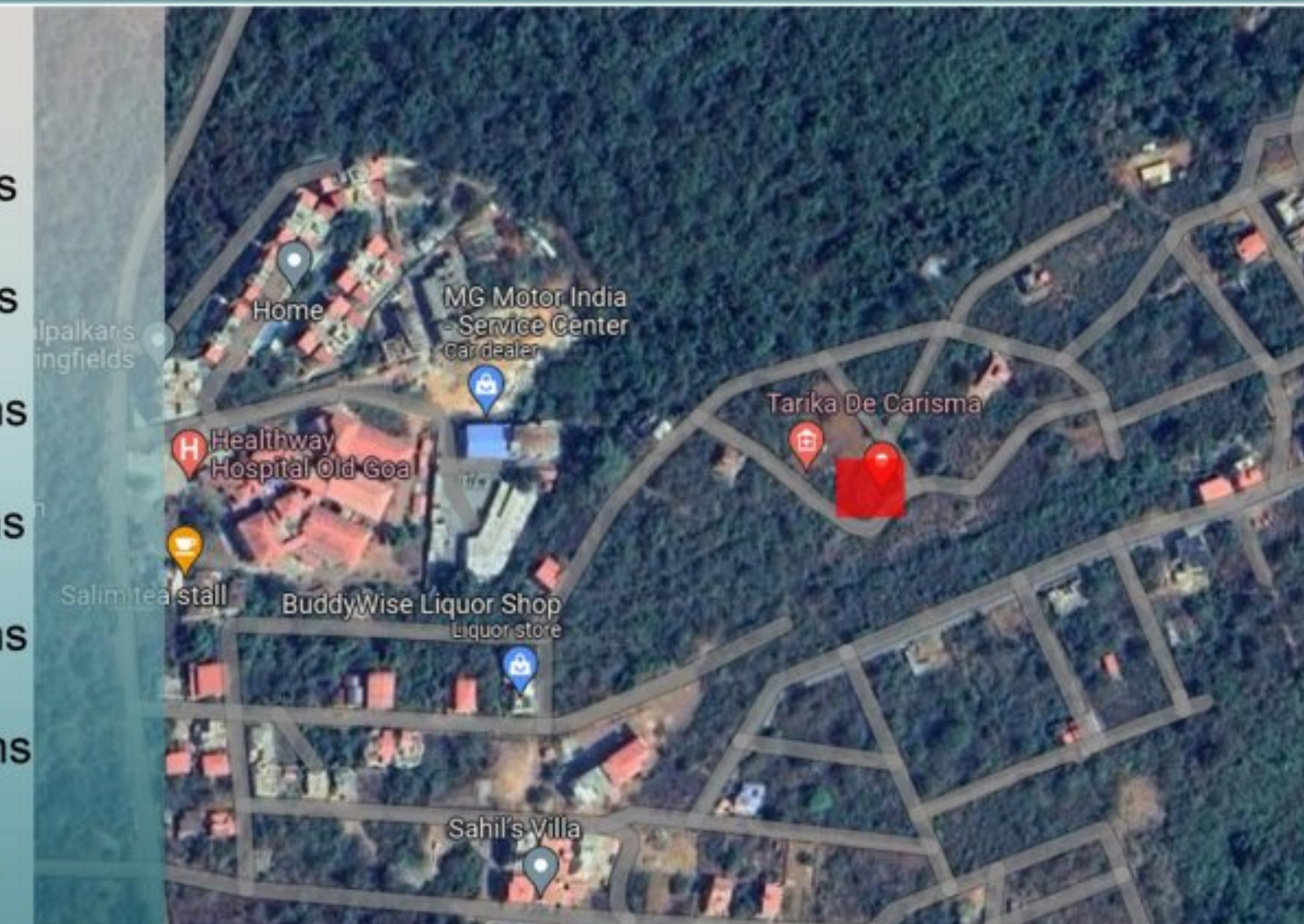
Email :- mskbuildingsystems@gmail.com

Website :- www.mskbuildersgoa.in

Cont:- +91-9225906776 / 7972304659

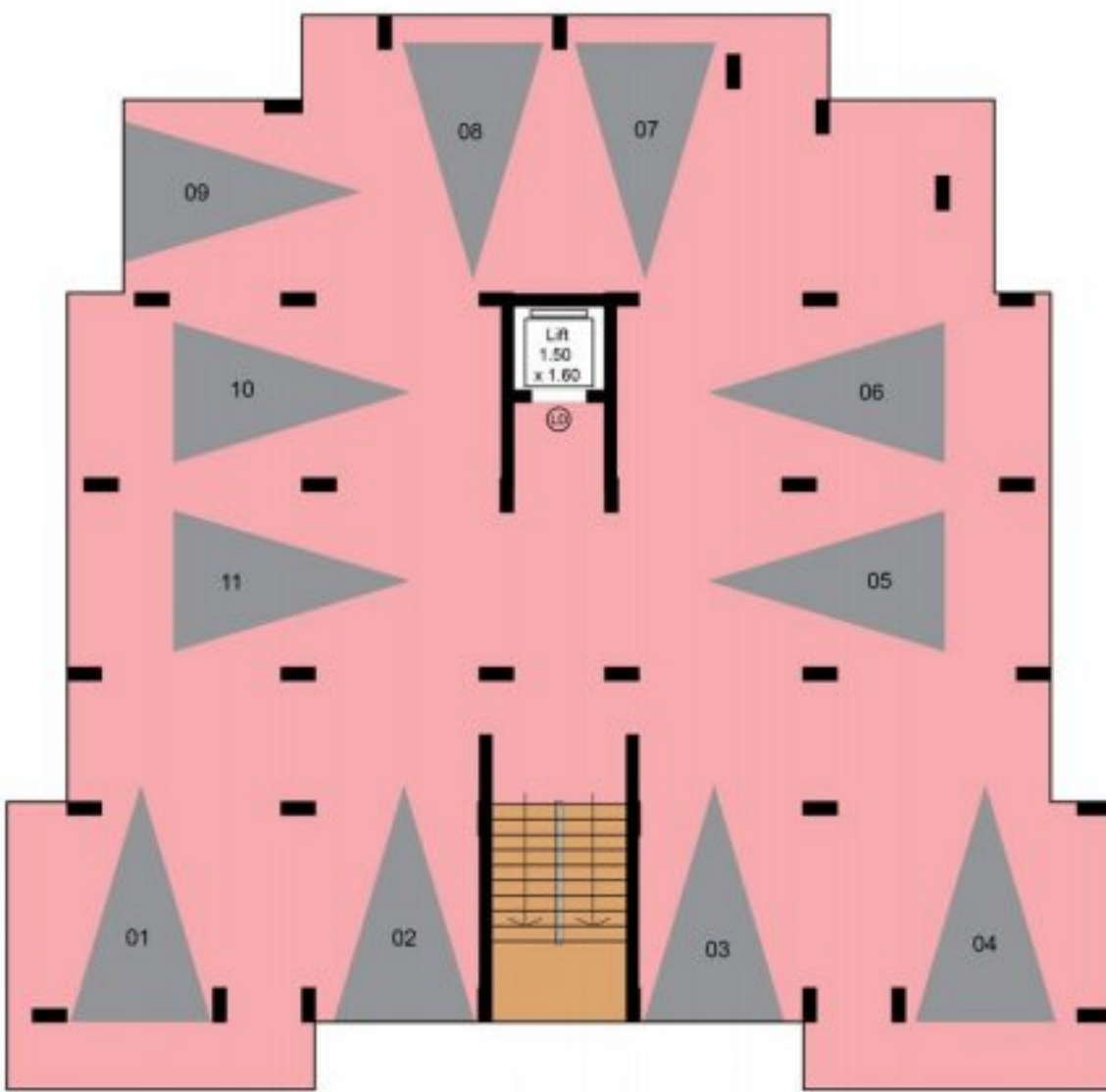
* LOCATION *

- * Panjim - 9 kms
- * Railway Station - 2.0 kms
- * Hospital - 1.8 kms
- * Park - 3.2 kms
- * Market - 1.0 kms
- * Airport - 26 kms
- * School - 6.8 kms
- * Bus Stand - 8 kms



* DISCLAIMER *

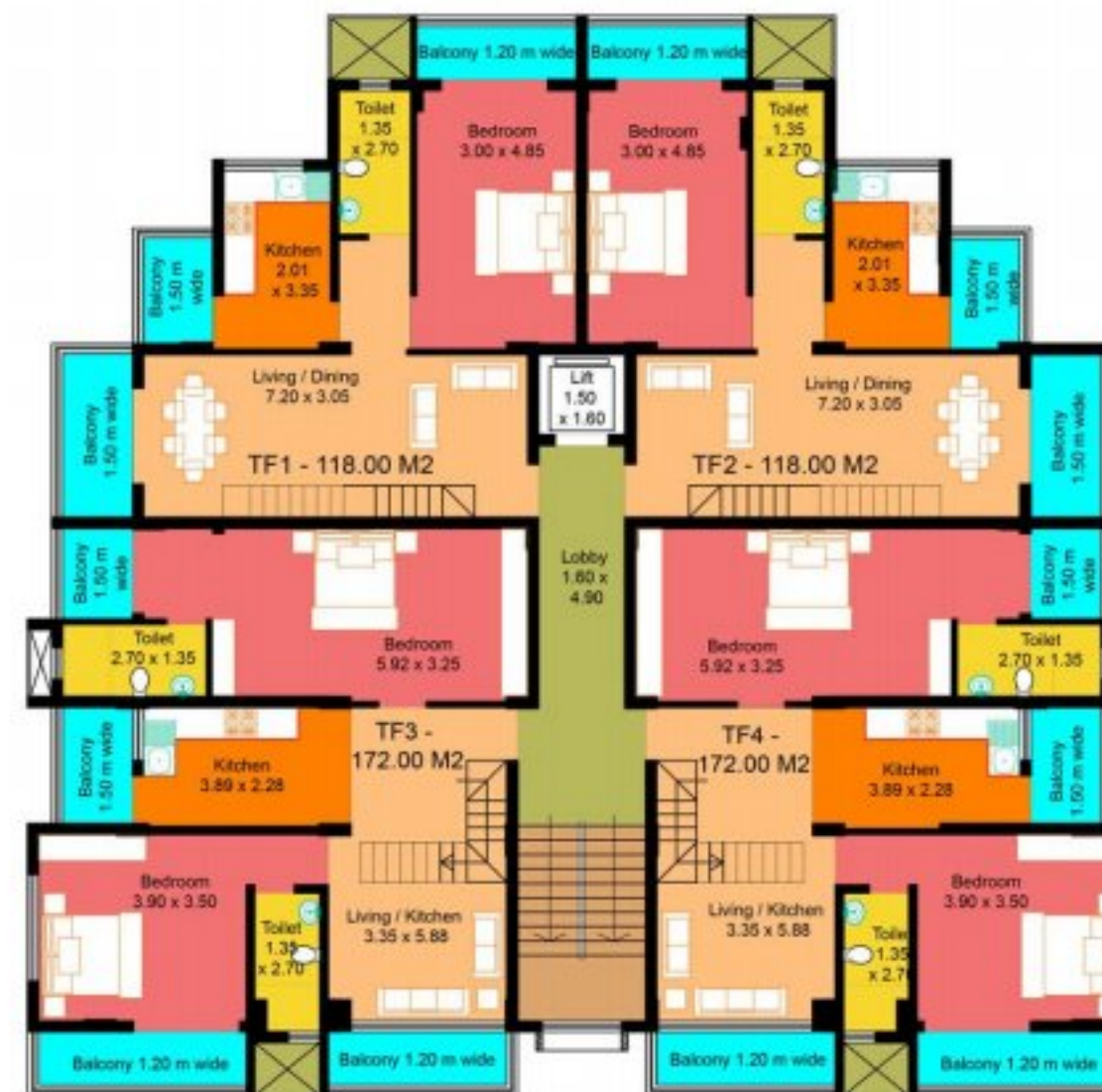
All illustrations and artist impressions in this brochure are only for indicative purpose, should not to be taken as actual and as legal document. There may be changes without prior notice and the discretion to do same remains solely with developer.



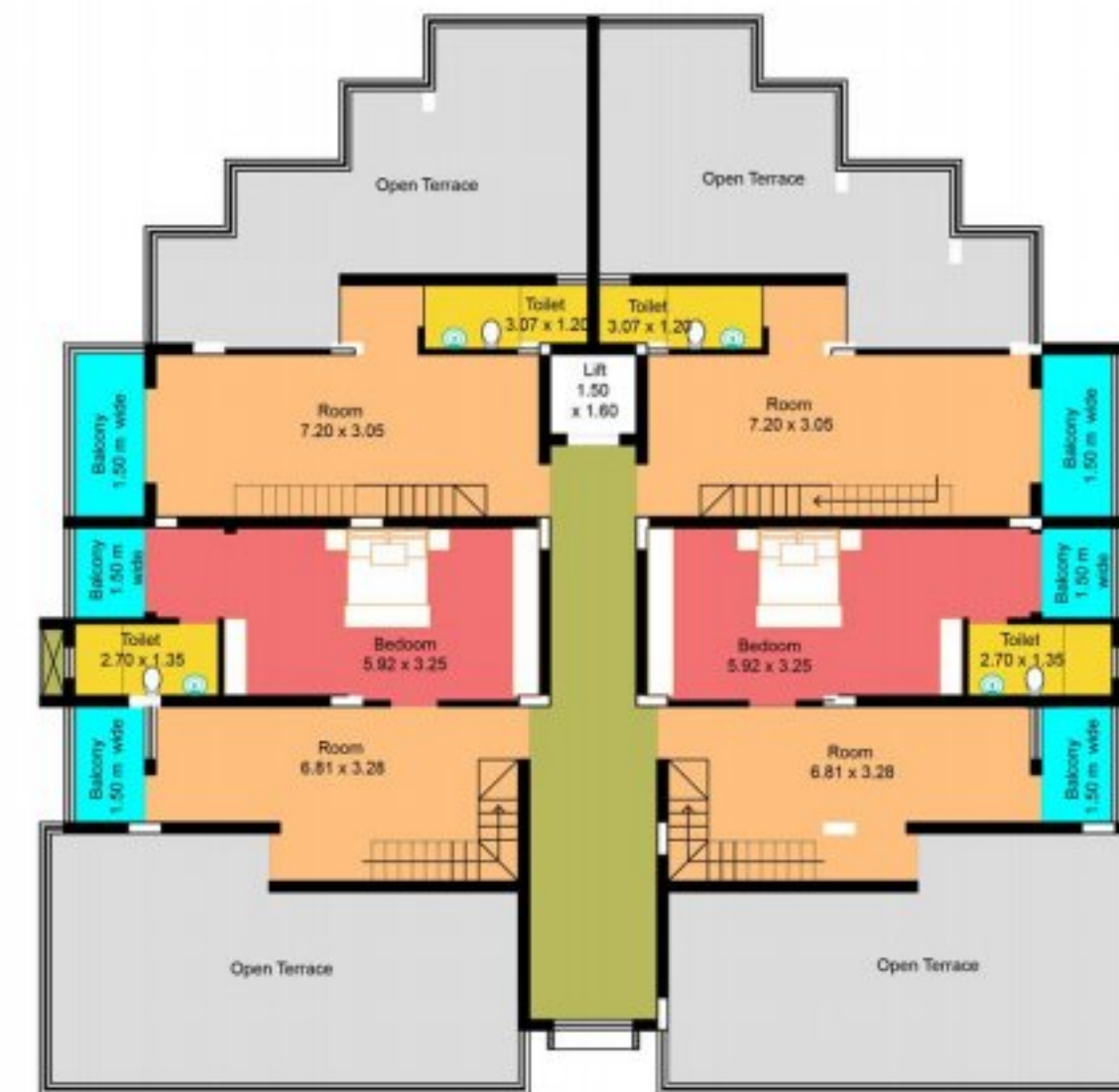
STILT FLOOR PLAN



UPPER GROUND FLOOR PLAN



THIRD FLOOR PLAN



ATTIC FLOOR PLAN



FIRST FLOOR PLAN



SECOND FLOOR PLAN

- Stilt Parking
- Silent Generator for common areas
- Bore well water for 24/7

- Lift with Generator Backup
- Solar Geyser

* BASIC AMENITIES *



* FRONT VIEW *